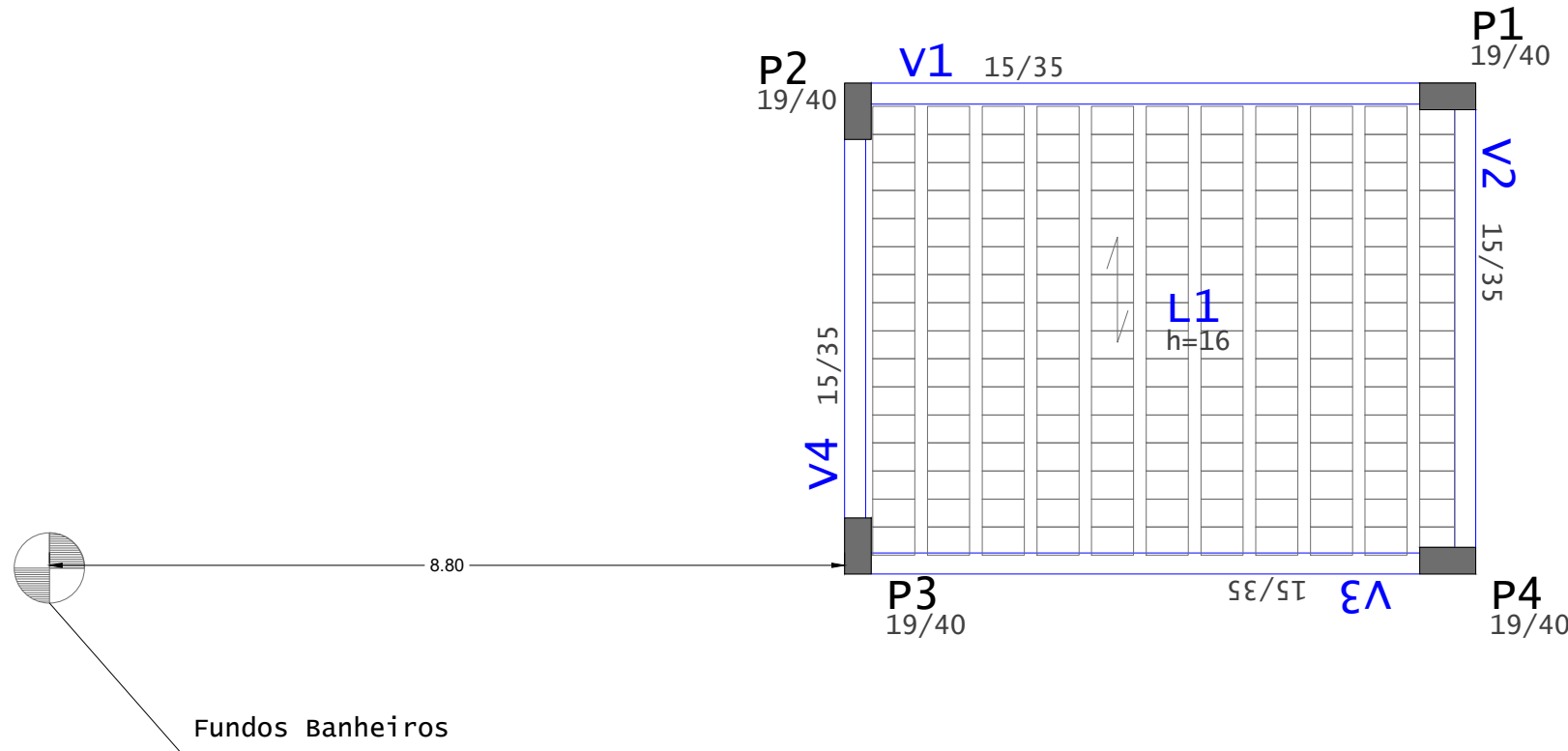
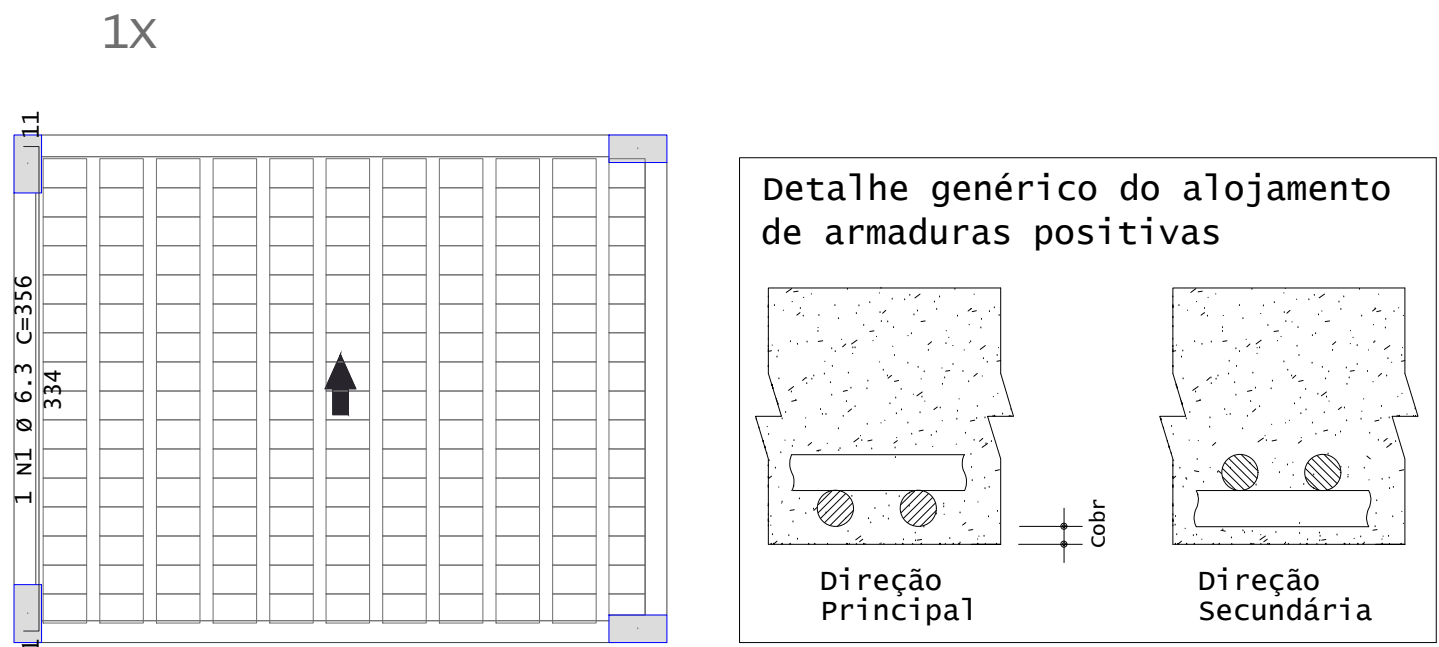


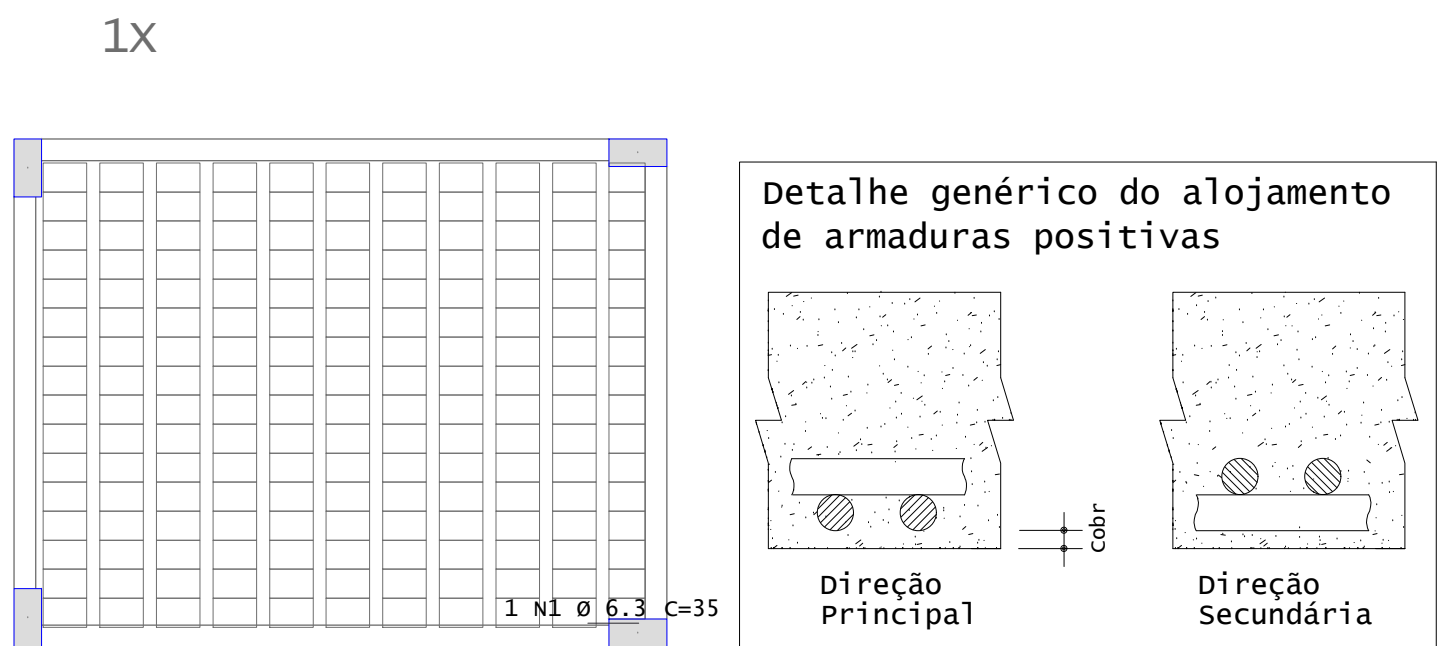
Forma Cobertura - Laje Impermeabilizada



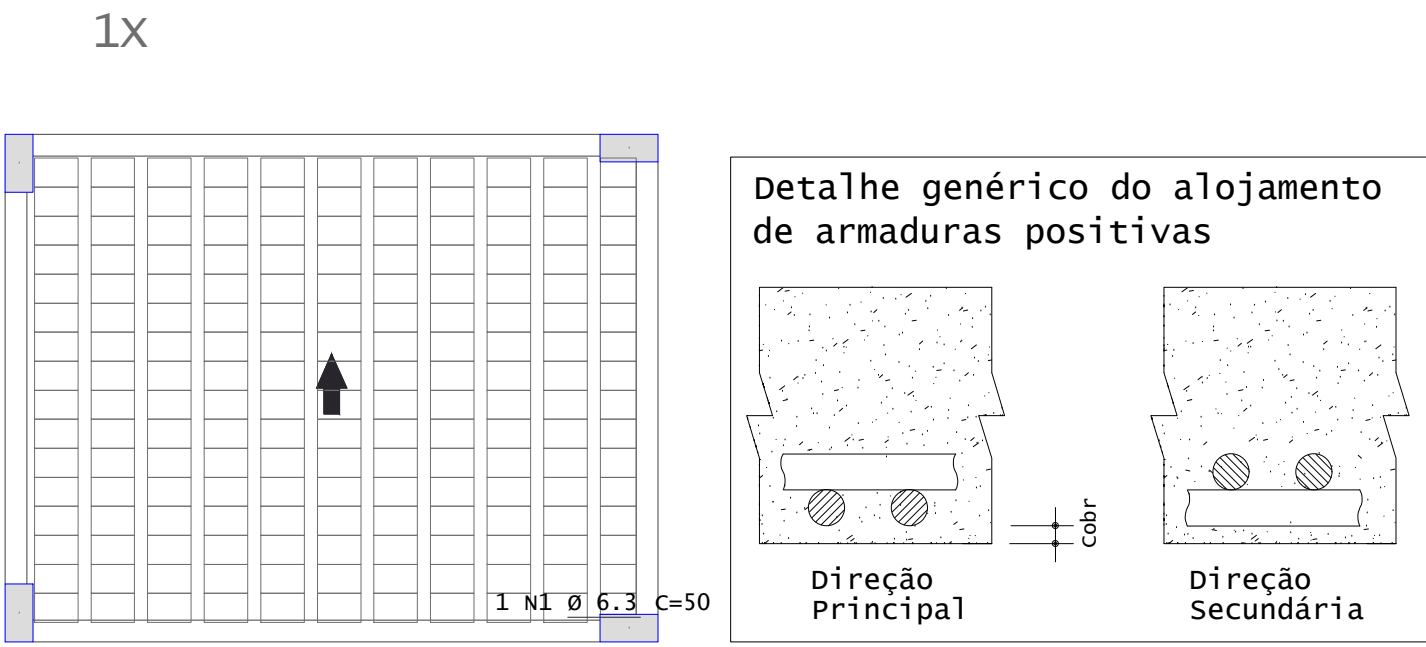
Cobertura - Armadura positiva principal



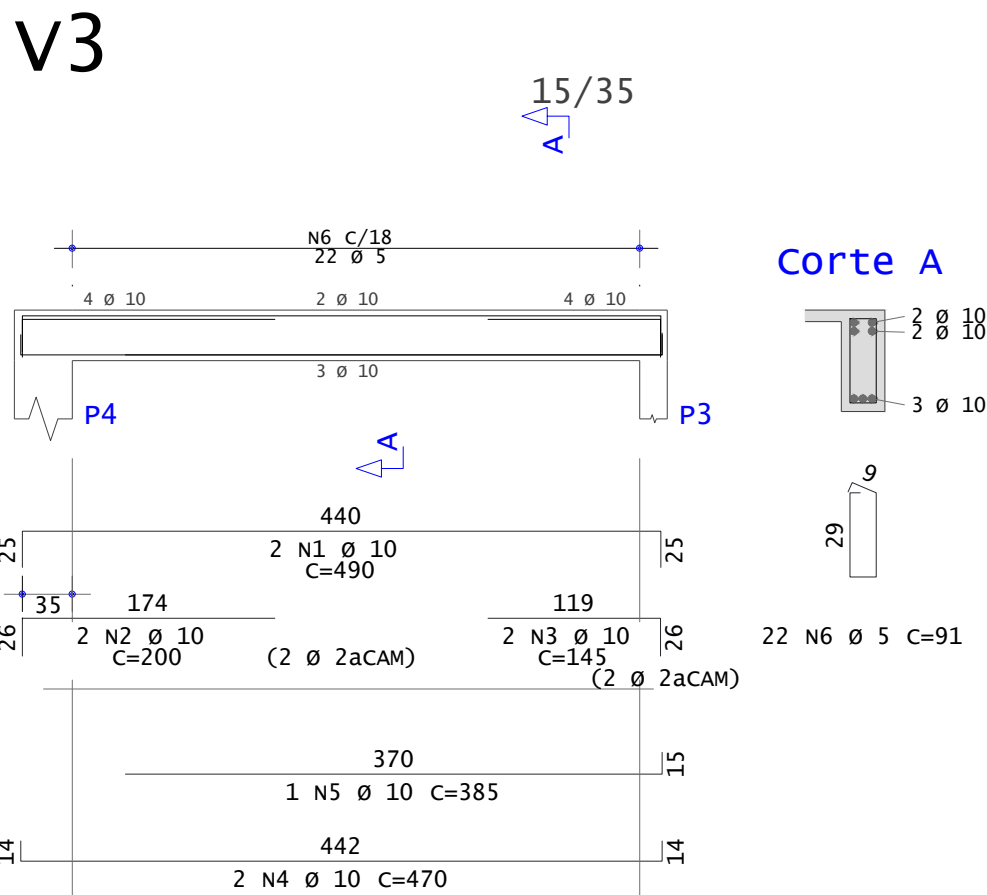
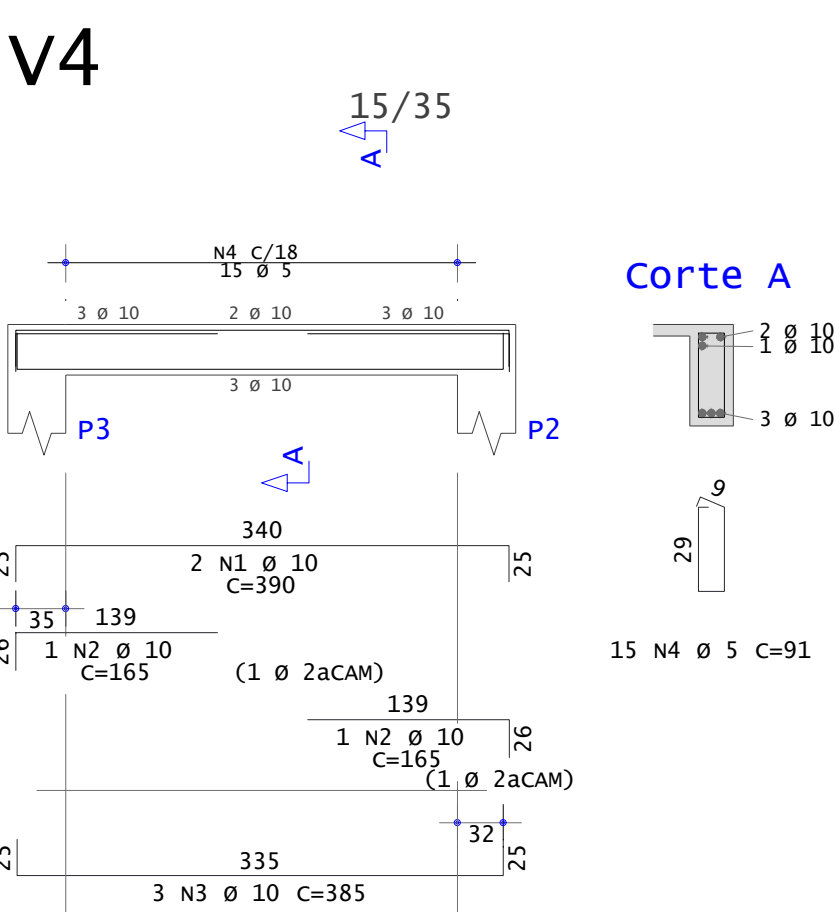
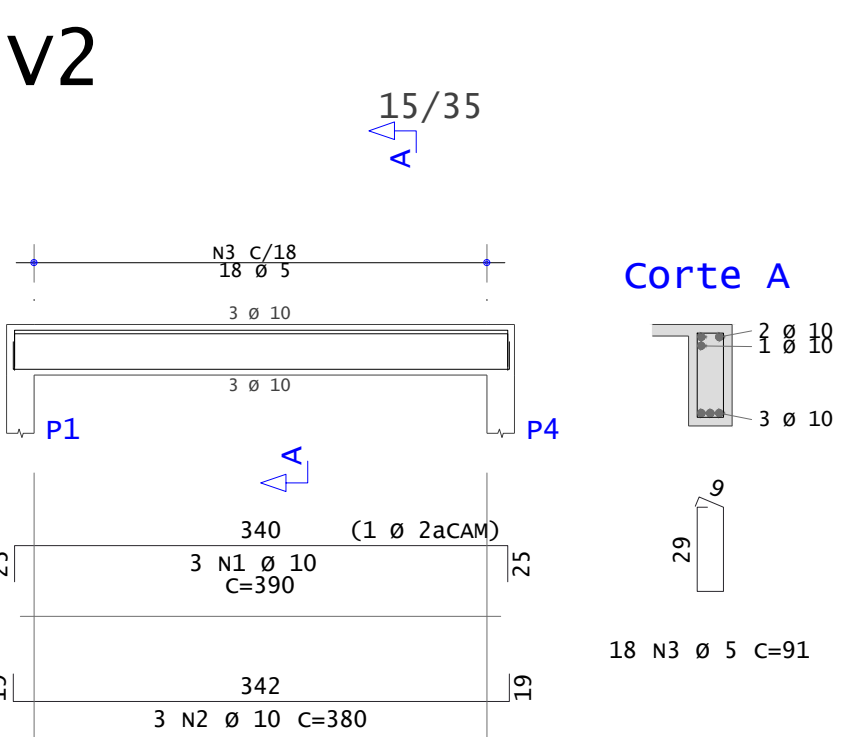
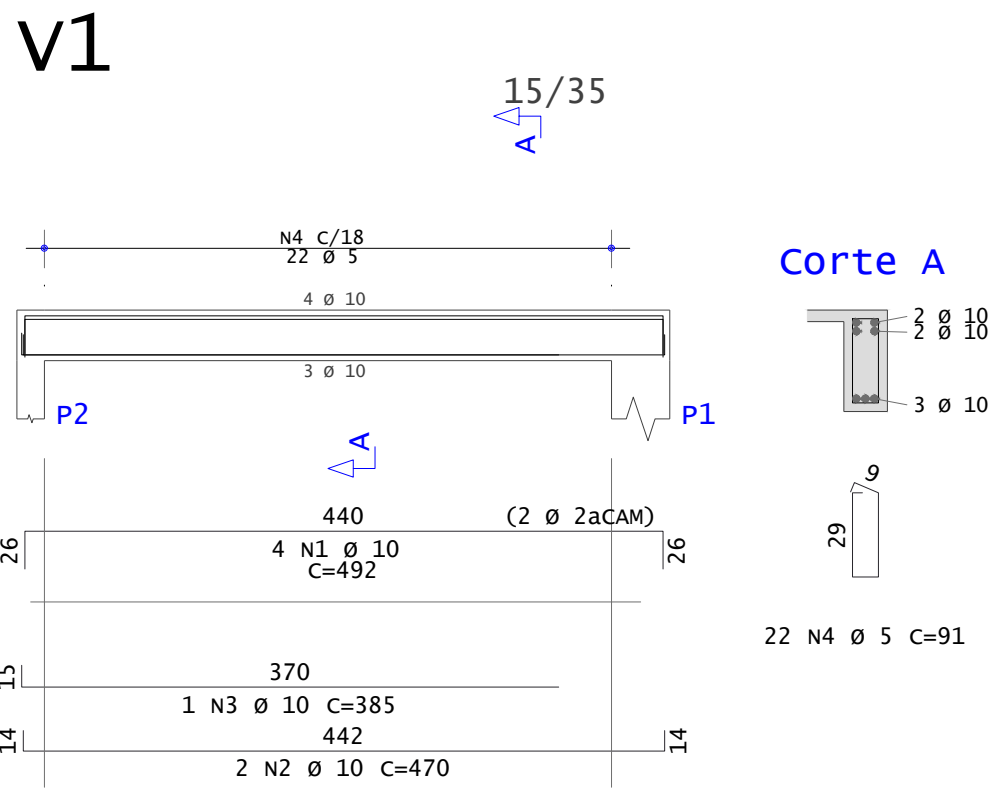
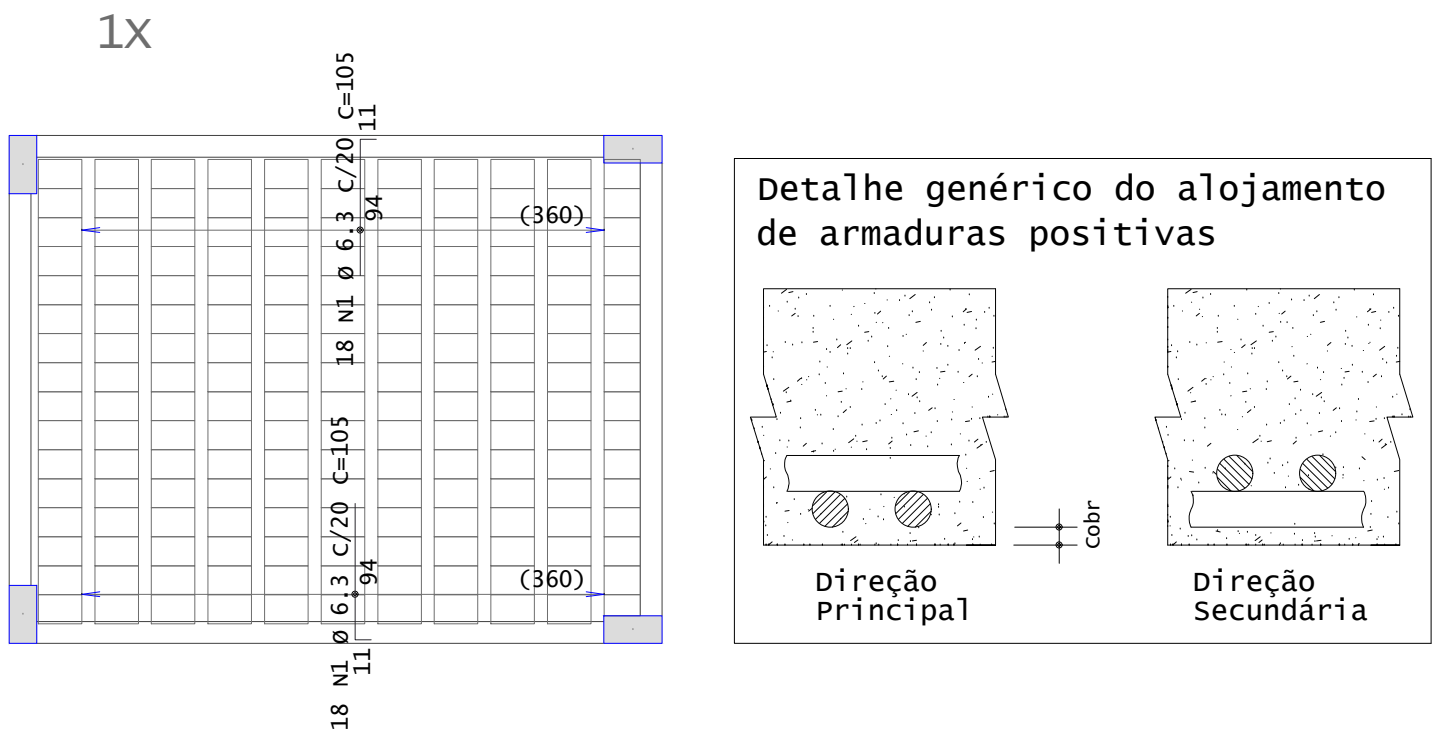
Cobertura - Armadura negativa principal



Cobertura - Armadura positiva secundaria



Cobertura - Armadura negativa secundaria



AÇO	POS	BIT	QUANT	COMPRIMENTO	
				UNIT	TOTAL
		mm		cm	cm
Cobertura - Armadura negativa principal					
50A	1	6.3	1	35	35
Cobertura - Armadura negativa secundaria					
50A	1	6.3	36	105	3780
Cobertura - Armadura positiva principal					
50A	1	6.3	1	356	356
Cobertura - Armadura positiva secundaria					
50A	1	6.3	1	50	50
V1					
50A	1	10	4	492	1968
50A	2	10	2	470	940
50A	3	10	1	385	385
60A	4	5	22	91	2002
V2					
50A	1	10	3	390	1170
50A	2	10	3	380	1140
60A	3	5	18	91	1638
V3					
50A	1	10	2	490	980
50A	2	10	2	200	400
50A	3	10	2	145	290
50A	4	10	2	470	940
50A	5	10	1	385	385
60A	6	5	22	91	2002
V4					
50A	1	10	2	390	780
50A	2	10	2	165	330
50A	3	10	3	385	1155
60A	4	5	15	91	1365

RESUMO DE AÇO			
AÇO	BIT	COMPR	PESO
	mm	m	kgf
60A	5	70	11
50A	6.3	42	10
50A	10	109	67
Peso Total		60A =	11 kgf
Peso Total		50A =	77 kgf



TISCOSKI  
ARQUITETURA E ENGENHARIA

PROJETO ESTRUTURAL

RESERVATÓRIO - EEB ZULEIMA  
BURIGO GUGLIELMI  
RUA RAFAEL MACCARI, 355  
PRINCÍPIA ISABEL  
MORRO DA FUMAÇA/SC

CONTEÚDO  
-PRANCHA DE COBERTURA  
-DETALHES DE LAJE E VIGAS

PRONCHIA  
03/04

PROPRIETÁRIO:  
  
MUNICÍPIO DE MORRO DA FUMAÇA  
CNPJ 83.000.323/0001-01

RESPONSÁVEL TÉCNICO:  
  
HJ ARQUITETURA E ENGENHARIA LTDA - CREA-SC 187117-2  
JULIANA DA SILVA TISCOSKI - CREA-SC 123317-7

ESCALA  
INDICADA

DESENHO  
AMANDA

ÁREA TOTAL  
31,50m²

DATA  
AGOSTO/2025